

Technical Specifications

Vega X1



Technical Specifications

Model	VEGA X1
Max. Print width	1800mm
Print heads Configurati	2 rows
Print Heads Quantity	16
Print Head Model	Kyocera (Katana model)
Variable dots	5/7/12 pl
Print Speed	Mode 1 Pass 600*600 dpi 320 m/h
	Mode 2 Pass 600*1,200 dpi 160 m/h
	Mode 3 Pass 600*1,800 dpi 90 m/h
Max. Print Resolution	2400dpi
Ink	Reactive, Disperse or Acid
Colors	C MB Y K O B LM LK LC
Image Format	JPEG, TIF, BMP/RGB, CMYK
Fabric Feeding System	Automatic Feeding
Fabric Transmission	Belt
Belt Cleaning	Multiple Combination with Sponge & Brush
Fabric Take Up System	Built-in with infrared dryer
Power	Printer and infrared dryer 20 KW
Voltage	380V/3PH/50HZ
Humidity	55%-70%
Temperature	22° C- 28° C
Installation Dimension	Around 10000*7000*2500mm (L*W*H)

Eco Friendly

OEKO-Passport, ZDHC

High Density

High density ink

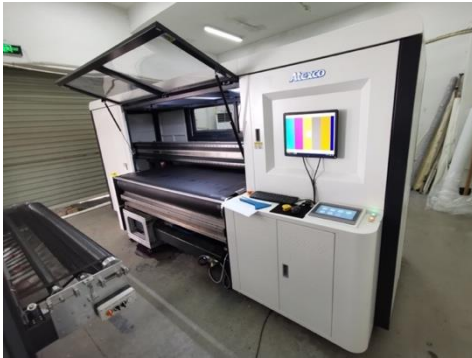
High Quality Low Price

Lower ink price makes it possible to compete with screen printing

Main Components Description

❖ Automatic feeding system

- ◆ **Servo motor:** Servo motor to drive fabric into printer stably.
- ◆ **Tension rollers:** Tension rollers to regulate the fabric' feeding tension.
- ◆ **Brush roller:** Brush roller to make the fabric more flat during feeding.
- ◆ **Heated roller:** Heated roller to position the fabric with synchronized mechanical movements during printing.
- ◆ **Fabric roller:** Max roll diameter 40 cm.
- ◆ **Optional:** Automatic mini roll feeding roller, elastic feeding system for knitted fabric.



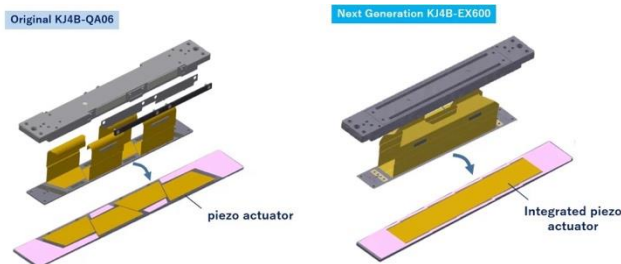
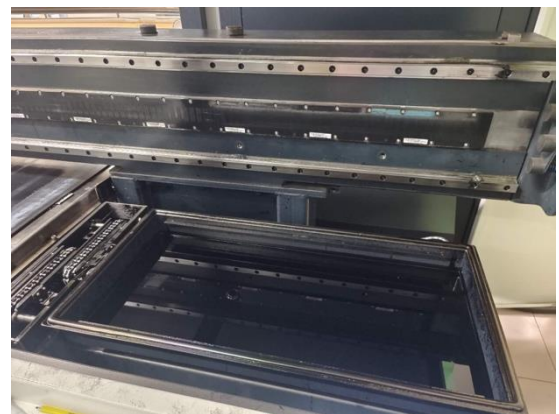
❖ Infrared dryer with take up system

- ◆ **Heating Source:** Electricity
- ◆ **Heating Temperature:** Adjustable temperature higher 100 ° c
- ◆ **Heating Method:** Adjustable recycling air.
- ◆ **Speed Control:** Automatically synchronize
- ◆ **Transmission Net Belt:** Single layer layer
- ◆ **Drying Chamber:** Single Chamber
- ◆ **Take Up Unit:** Built-in



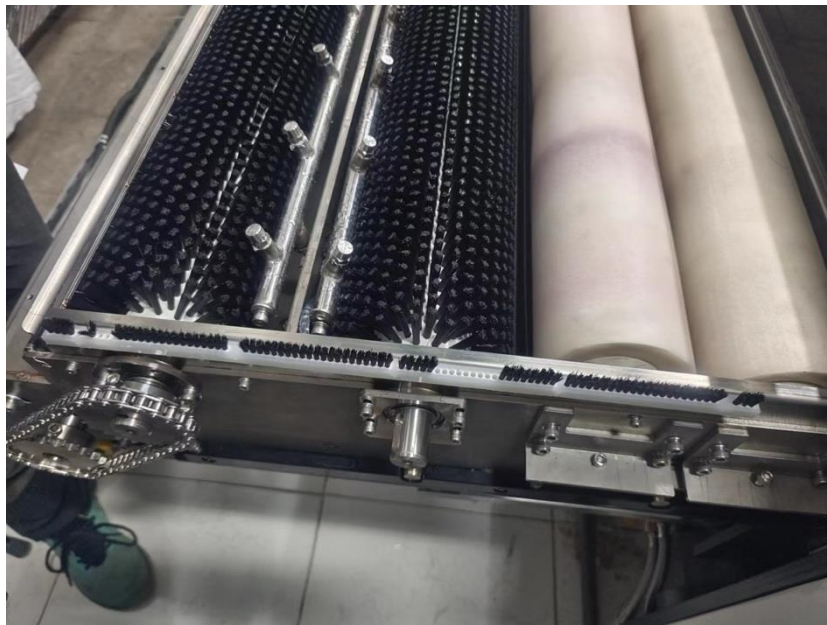
Digital printing system

- ◆ **Printing unit:** 16 Kyocera heads in 2 rows.
- ◆ **Variable ink drop sizes:** 5/7/12 pl
- ◆ **The degassing system:** Greatly prevents head clogging.
- ◆ **Print heads carriage:** Strong steel beam with magnetic linear motor can set up height maximum 10 mm.,minimum 2.5 mm.,and print on maximum fabric thickness 8 mm.
- ◆ **Anti-crash print head system:** High precision height limit sensor and head carriage lifting protection equipped the emergency brake system, the carriage automatically rises when fabric pulled by fabric by improper operation, multiple protection guaranteed the head safety.
- ◆ **Print heads cleaning unit:** Optional single channel and multi-channels cleaning to reduce ink waste and extend the heads lifespan.
- ◆ **Rip Software:** VEGAPRINT developed by Atexco.

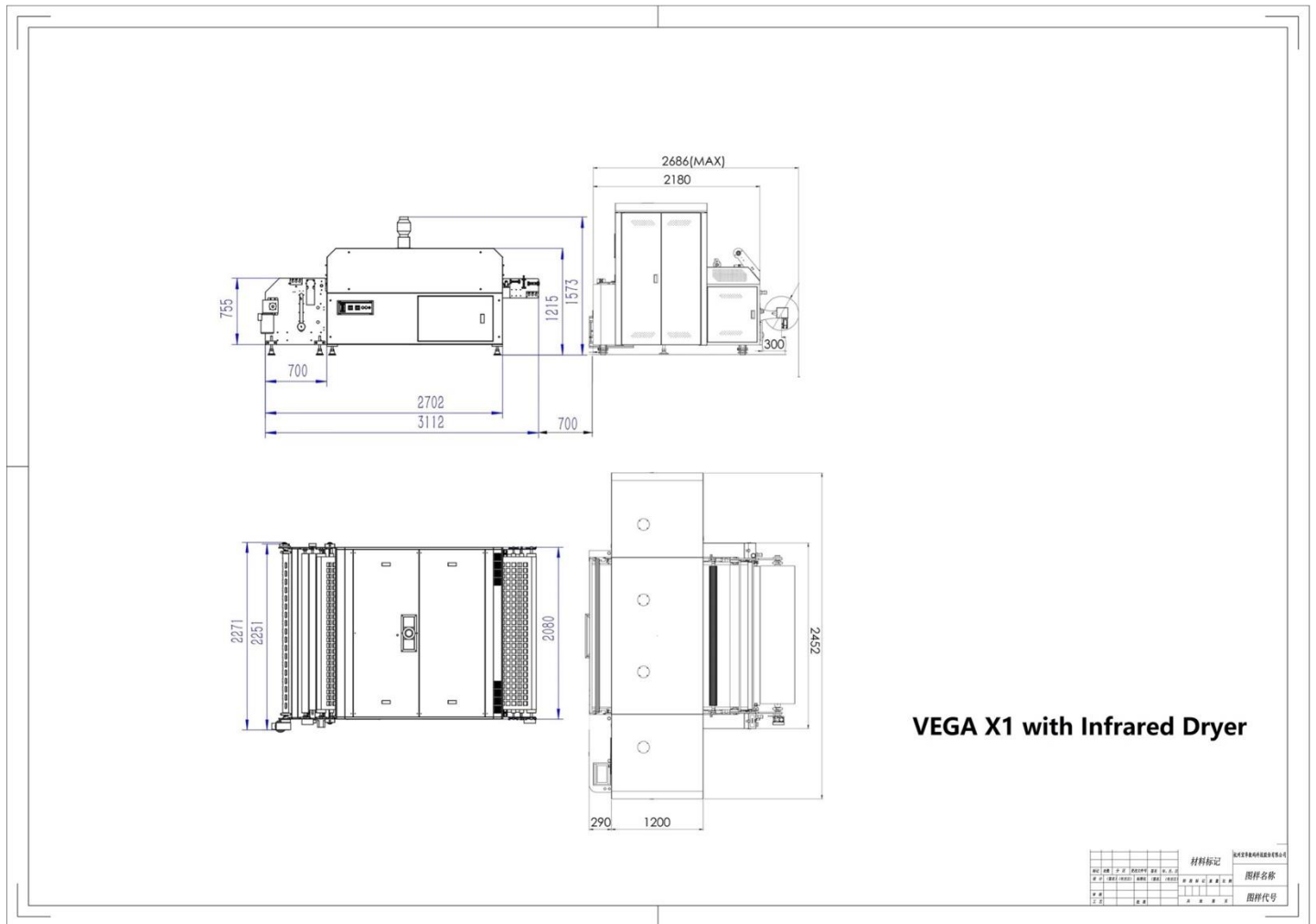


❖ Belt and belt cleaning system

- ◆ **Transmission belt:** The length is designed after numerous research and development, perfectly achieve the balance between accuracy, productivity, space and operation convenience.
- ◆ **Wiper cleaning:** Followed the double wiper cleaning system spraying water on blanket, ink wipe and washing coupling effected, reduce the cleaning time and increase the efficiency.
- ◆ **Belt dryer:** Able to set working temperature and standby temperature respectively have heating fan under belt, more humanized.
- ◆ **Belt washing:** Servo motor control, can adjust speed according to fabric thickness.
- ◆ **Brush system:** Newly applied brush roller at the feeding section, better smooth the fabric wrinkle. (the brush system is more useful at thick fabric, if fabric very thin, we also prepared smooth roller).



Layout Drawing Vega X1 with Infrared Dryer



Installation Layout

